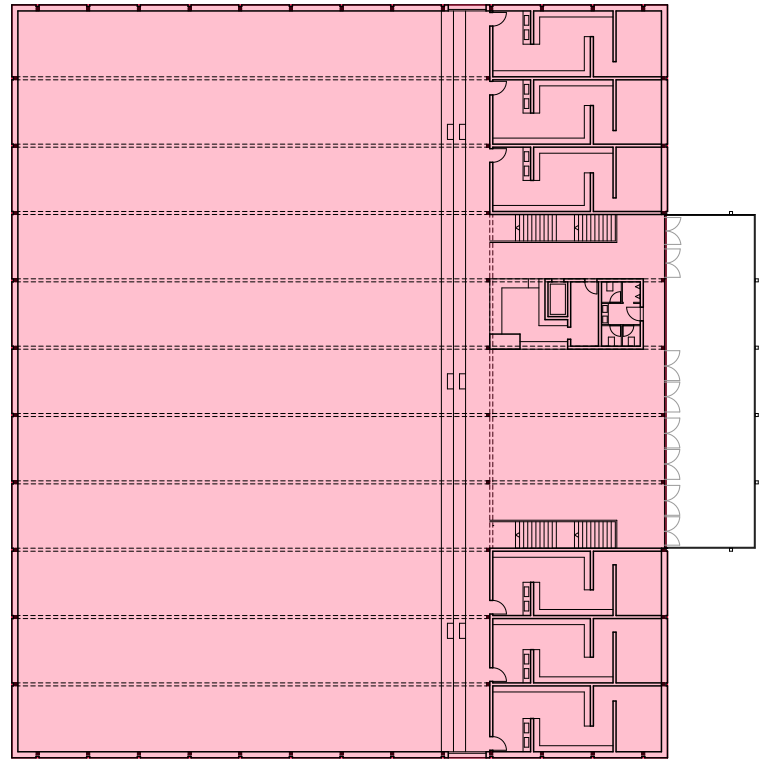
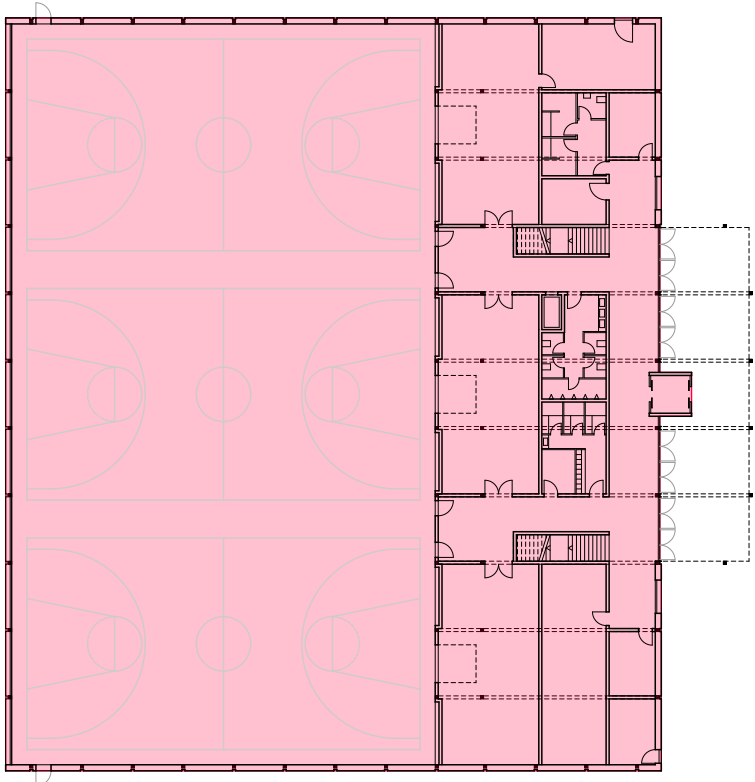


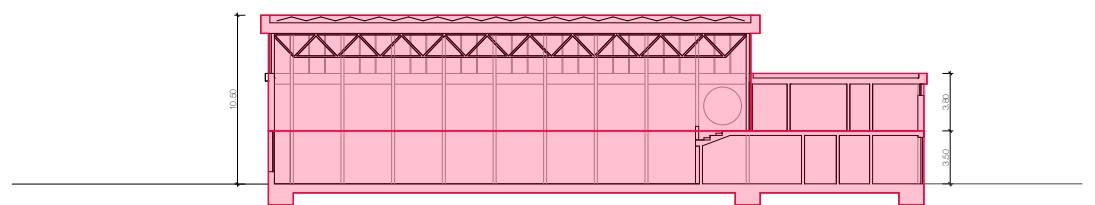
SIA-Norm 416

Geschossfläche (GF) + Gebäudevolumen (GV)

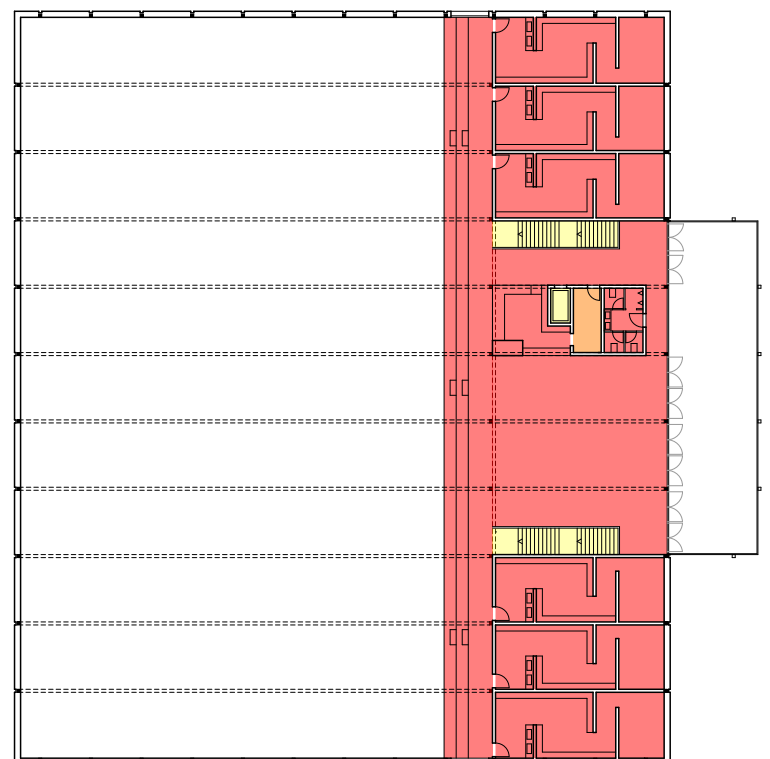
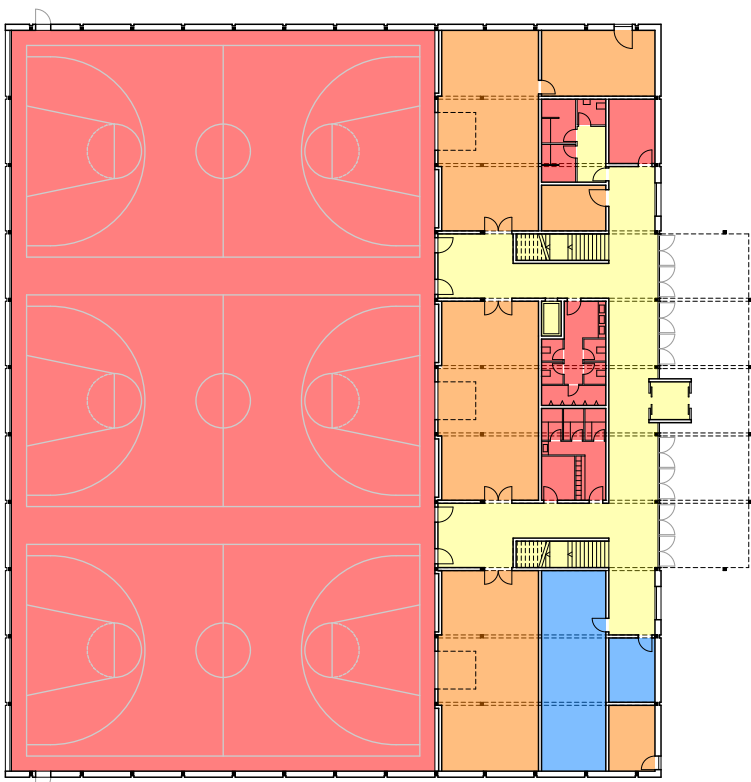


GF (m²) GV (m³)

1.OG	2157 m ²	13293 m ³
0.EG	2163 m ²	7570 m ³
Total	4320 m²	20863 m³



Nettogeschossfläche (NGF)

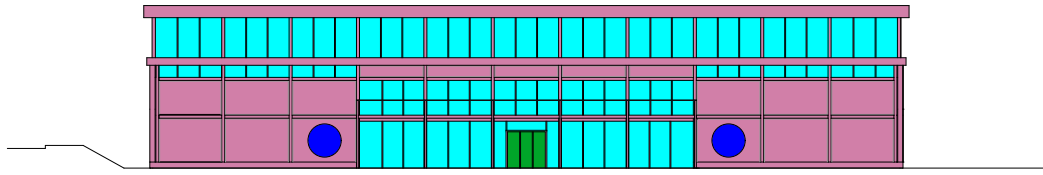


HNF (m²) NNF (m²) VF (m²) FF (m²)

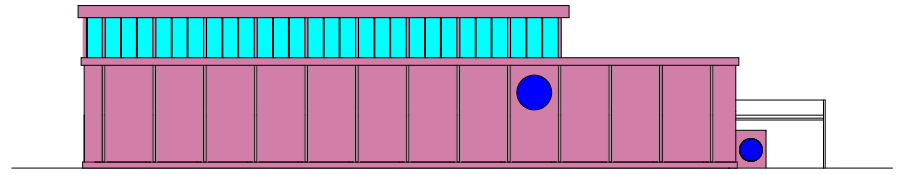
1.OG	643 m ²	8 m ²	32 m ²	0 m ²
0.EG	1449 m ²	316 m ²	207 m ²	69 m ²
Total	2092 m²	324 m²	239 m²	69 m²

SIA-Norm 416

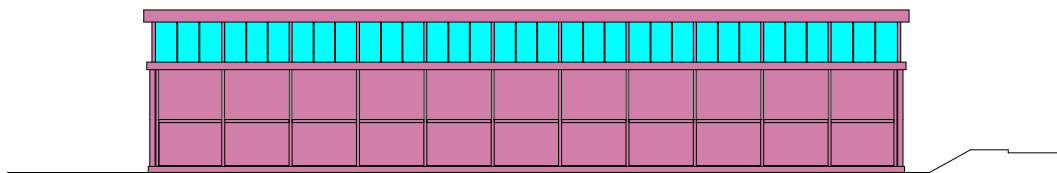
Äussere Wandbekleidung Gebäude (E)



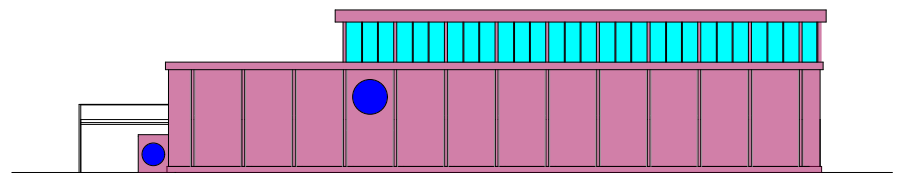
Ansicht Ost



Ansicht Süd



Ansicht West

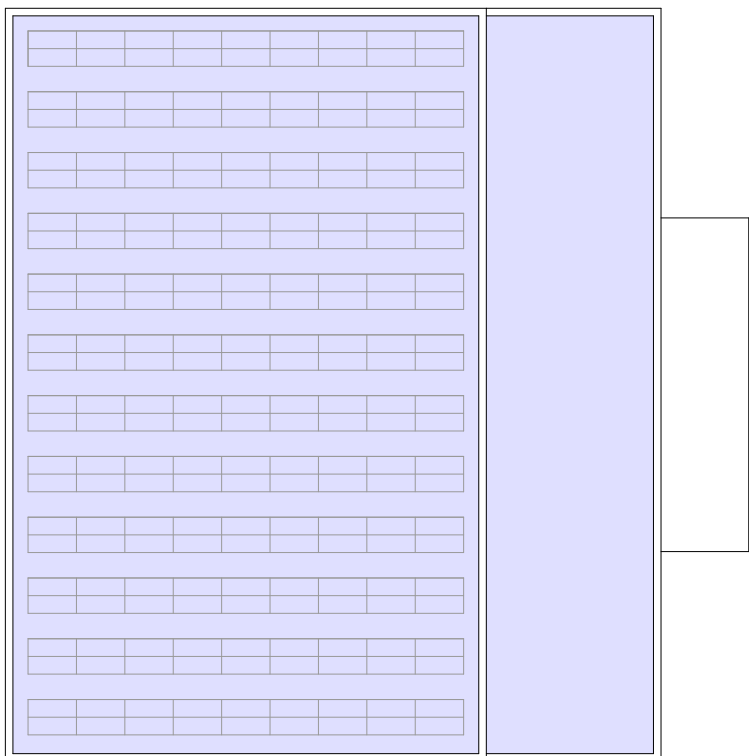


Ansicht Nord

E02 (m²)
 Fenster (m²)
 Verglassung (m²)
 Türe (m²)

Total	1463 m ²	20 m ²	520 m ²	6 m ²
--------------	---------------------	-------------------	--------------------	------------------

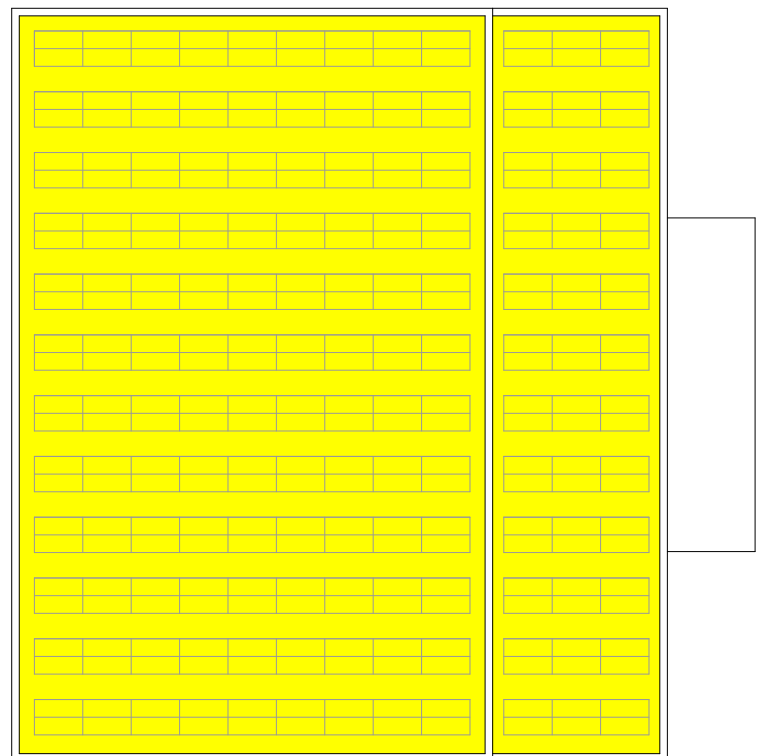
Bedachung Gebäude (F)



F (m²)

Total	2042 m ²
--------------	---------------------

Photovoltaikanlage Dach (PVD)

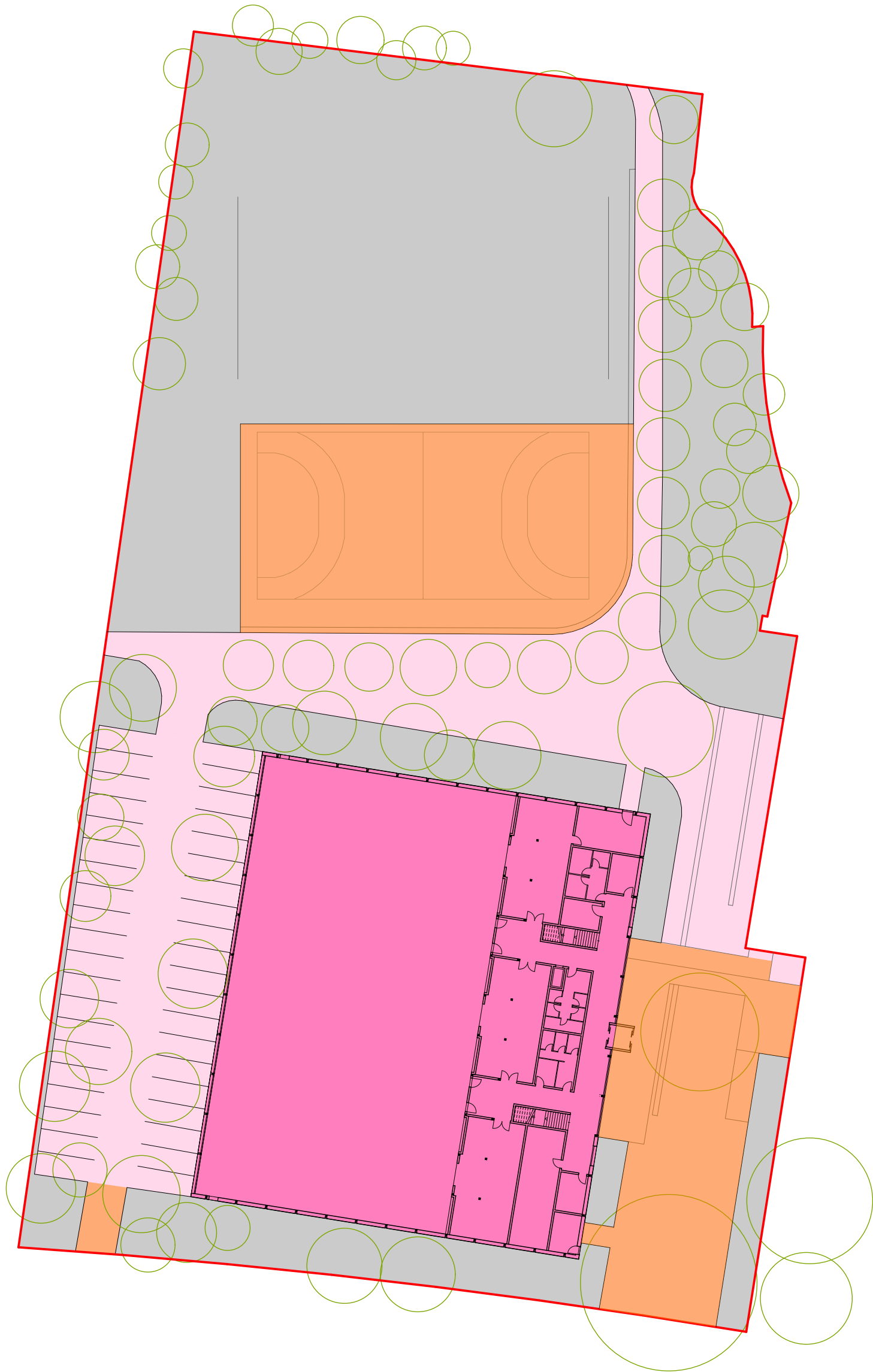


PVD (m²)

Total	2042 m ²
--------------	---------------------

SIA-Norm 416

Bearbeitungsperimeter (BP)



GGF (m²) IO4 versiegelt (m²) IO4 teilversiegelt (m²) IO3 (m²)

Total	2163 m²	1650 m²	2004 m²	4023 m²
--------------	---------------------------	---------------------------	---------------------------	---------------------------